



**CASCADE VILLAGE**  
SHOPPING CENTER

**RETAIL SPACE  
FOR LEASE**  
63455 N. Hwy. 97  
Bend, OR 97703

**SUITE VS-260**



**At the Main Entrance to the Shopping Center**



**2,000 – 5,682 SF**

**COMPASS**  **Commercial**  
*Navigating Your Success* REAL ESTATE SERVICES

**Russell Huntamer, CCIM**  
**Adam Bledsoe, Broker**

600 SW Columbia St., Ste. 6100 | Bend, OR 97702  
541.383.2444 | www.compasscommercial.com

**NB** **NEVILLE & BUTLER**  
Commercial Real Estate

**Steven Neville, Broker**  
**Natalie Butler, Broker**

900 SW 13th Avenue, Suite 210 | Portland, OR 97205  
503.241.1222 | www.nevillebutler.com



**CASCADE VILLAGE**  
SHOPPING CENTER

Cascade Village Shopping Center is a 367,829 square foot open-air center situated at the gateway to Bend, Oregon. Located at the confluence of Highways 20 and 97 on Bend's north end, the Center has exposure to 62,900 cars per day (ODOT 2016) and can be easily accessed by all directions.

### SUITE VS-260

This 2,000-5,682 square foot retail space is located at the main entrance to the shopping center in a high visibility and traffic location. Near Village Plaza, a prime location near the shopping center's custom water/fire feature.

### VILLAGE PLAZA

Village Plaza serves as a social gathering place and is where Cascade Village hosts entertainment events.



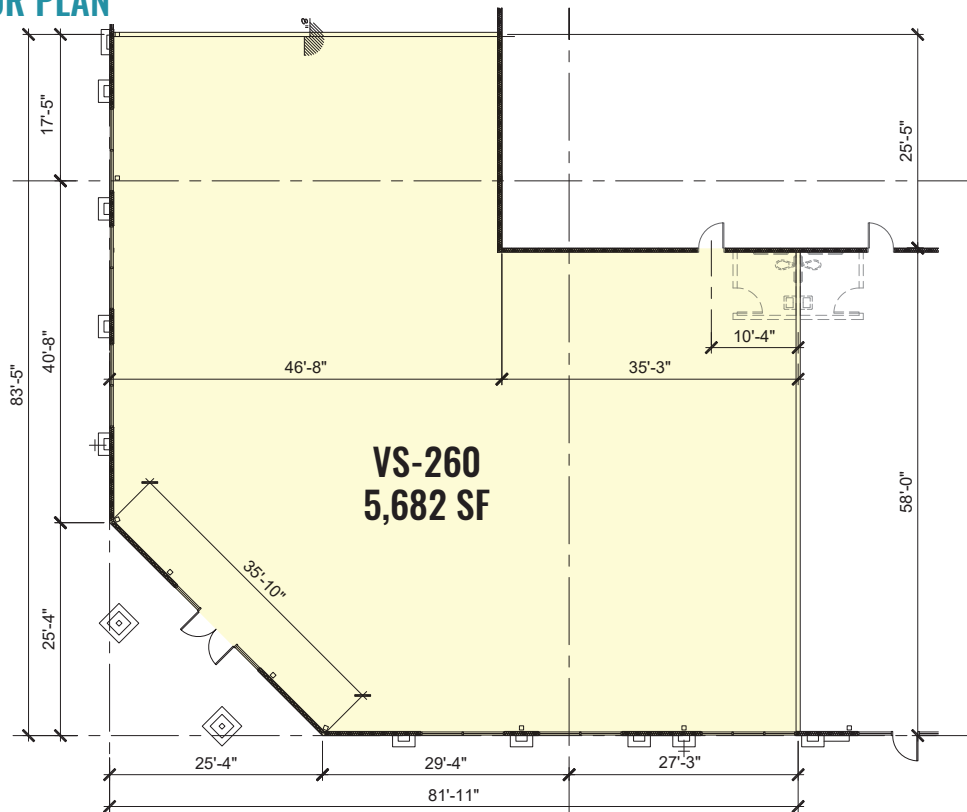
# RETAIL SPACE FOR LEASE

63455 N. Hwy. 97  
Bend, OR 97703

### HIGHLIGHTS

- High visibility/traffic location at the main entrance to the shopping center
- Next to Sprint and Men's Warehouse, Togo's and Starbucks
- BendBroadband and gas services available
- ±13' open structure or ±10' clear height ceiling
- 250 amp electrical service
- NNN's estimated at \$8.22/SF/Yr.

### FLOOR PLAN



For More Information  
Please Contact:

**COMPASS** Commercial  
REAL ESTATE SERVICES

**541.383.2444**

**Russell Huntamer, CCIM**  
rh@compasscommercial.com

**Adam Bledsoe, Broker**  
abledsoe@compasscommercial.com

**NB** NEVILLE & BUTLER  
Commercial Real Estate

**503.241.1222**

**Steven Neville, Broker**  
steve@nevillebutler.com

**Natalie Butler, Broker**  
natalie@nevillebutler.com

Brokers are licensed in the state of Oregon. This information has been furnished from sources we deem reliable, but for which we assume no liability. This is an exclusive listing. The information contained herein is given in confidence with the understanding that all negotiations pertaining to this property be handled through Compass Commercial Real Estate Services. All measurements are approximate.