



CASCADE VILLAGE
SHOPPING CENTER

**RETAIL SPACE
FOR LEASE**
63455 N. Hwy. 97
Bend, OR 97703

SUITE VS-80



Corner Location Next to Shinsei Sushi



965 SF

NB NEVILLE & BUTLER
Commercial Real Estate

Steven Neville, Broker
Natalie Butler, Broker

900 SW 13th Avenue, Suite 210 | Portland, OR 97205
503.241.1222 | www.nevillebutler.com

COMPASS COMMERCIAL  **REAL ESTATE SERVICES**

Russell Huntamer, CCIM | 541.419.2634

600 SW Columbia St., Ste. 6100 | Bend, OR 97702
www.CompassCommercial.com



CASCADE VILLAGE
SHOPPING CENTER

Cascade Village Shopping Center is a 367,829 square foot open-air center situated at the gateway to Bend, Oregon. Located at the confluence of Highways 20 and 97 on Bend's north end, the Center has exposure to 62,900 cars per day (ODOT 2019) and can be easily accessed by all directions.

SUITE VS-80

This 965 square foot retail space is located next to Shinsei Sushi, near Village Plaza, a prime location near the shopping center's custom water/fire feature.

VILLAGE PLAZA

Village Plaza serves as the social gathering place for families and friends and is where Cascade Village hosts several entertainment events.



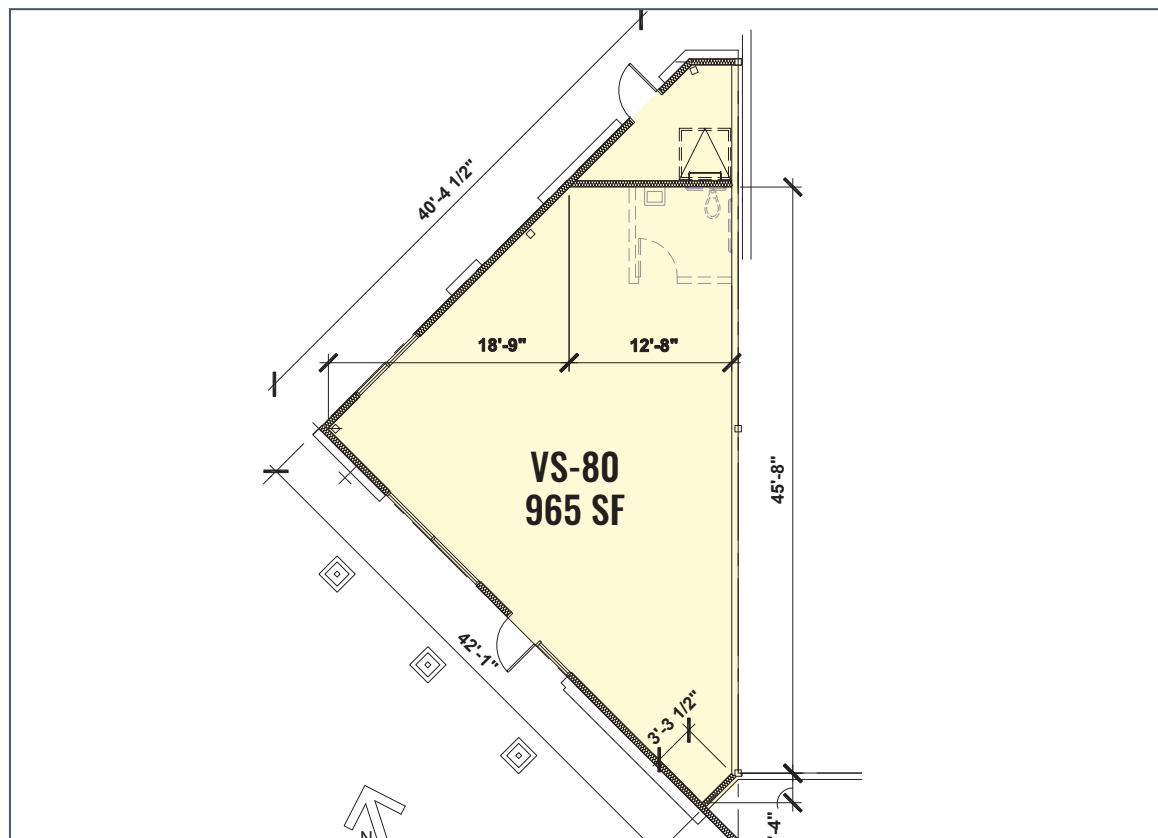
RETAIL SPACE FOR LEASE

63455 N. Hwy. 97
Bend, OR 97703

VS-80 HIGHLIGHTS

- Located at one of three entrances to Village Shops and Village Plaza
- Open field parking directly outside space
- BendBroadband and gas services available
- ±13' open structure or ±11.5' clear height ceiling
- 250-amp electrical service
- NNN's estimated at \$7.44/SF/Yr.

FLOOR PLAN



Brokers are licensed in the state of Oregon. This information has been furnished from sources we deem reliable, but for which we assume no liability. This is an exclusive listing. The information contained herein is given in confidence with the understanding that all negotiations pertaining to this property be handled through Compass Commercial Real Estate Services. All measurements are approximate.

For More Information
Please Contact:



541.419.2634

Russell Huntamer, CCIM
rh@compasscommercial.com



503.241.1222

Steven Neville, Broker
steve@nevillebutler.com

Natalie Butler, Broker
natalie@nevillebutler.com