



**CASCADE VILLAGE**  
SHOPPING CENTER

**RETAIL SPACE  
FOR LEASE**  
63455 N. Hwy. 97  
Bend, OR 97703

**SUITE VS-310**



**Prominent Endcap Space**



**2,058 SF | \$24/SF/Yr. NNN**

**NB** NEVILLE & BUTLER  
Commercial Real Estate

Steven Neville, Broker  
Natalie Butler, Broker

900 SW 13th Avenue, Suite 210 | Portland, OR 97205  
503.241.1222 | www.nevillebutler.com

**COMPASS** COMMERCIAL REAL ESTATE SERVICES

Russell Huntamer, CCIM  
Eli Harrison, Broker

600 SW Columbia St., Ste. 6100 | Bend, OR 97702  
541.383.2444 | www.CompassCommercial.com



**CASCADE VILLAGE**  
SHOPPING CENTER

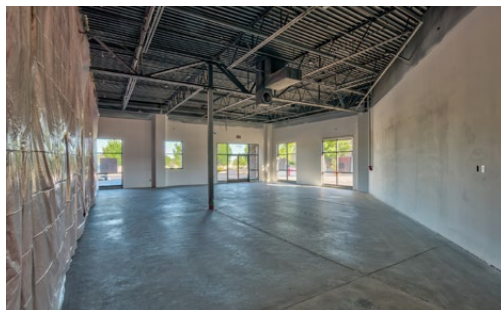
Cascade Village Shopping Center is a 367,850 square foot open-air center situated at the gateway to Bend, Oregon. Located at the confluence of Highways 20 and 97 on Bend's north end, the Center has exposure to almost 60,000 cars per day (ODOT 2020) and can be easily accessed from all directions.

**VS-310 | \$24/SF/Yr. NNN**

This 2,058 SF retail space is located on the west side of Cascade Village. It is newly constructed and move-in ready on an endcap space next to Affordable Dentures & Implants and Sport Clips with open field parking in front.

**VILLAGE PLAZA**

Village Plaza serves as the social gathering place for families and friends and is where Cascade Village hosts several entertainment events.



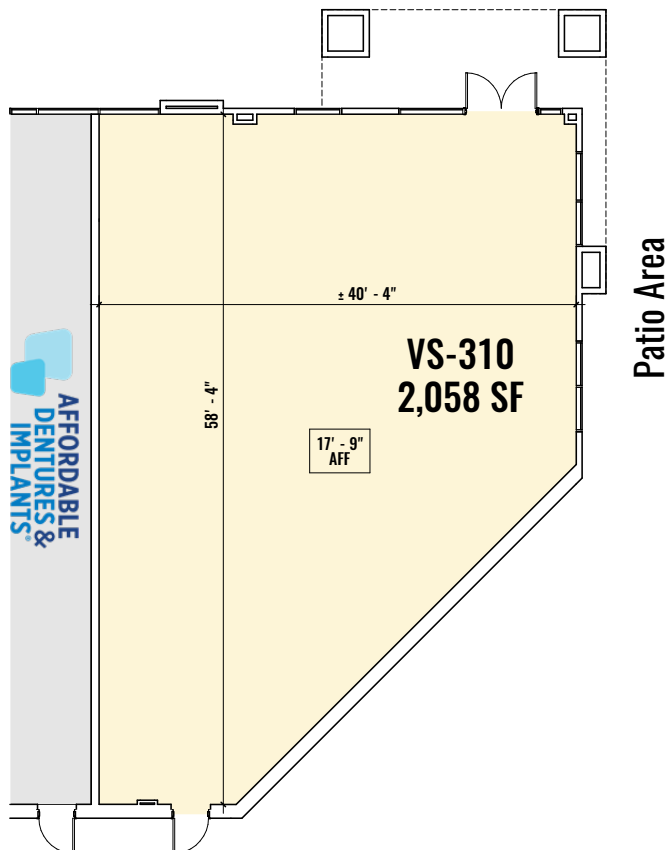
**RETAIL SPACE  
FOR LEASE**

63455 N. Hwy. 97  
Bend, OR 97703

**VS-310 HIGHLIGHTS**

- Faces Highway 20 and future Phase II portion of center
- Stained concrete floors with accent
- Pendant sconces and goose neck lighting
- One ADA compliant designer bathroom
- BendBroadband and gas services available
- ±15' open structure or ±13' clear height ceiling
- 200-amp electrical service
- NNN's estimated at \$8.41/SF/Yr.
- Marketing fund at \$1.00/SF/Yr.

**FLOOR PLAN**



**For More Information  
Please Contact:**



**541.383.2444**

**Russell Huntamer, CCIM**

[rh@compasscommercial.com](mailto:rh@compasscommercial.com)

**Eli Harrison, Broker**

[eharrison@compasscommercial.com](mailto:eharrison@compasscommercial.com)



**503.241.1222**

**Steven Neville, Broker**

[steve@nevillebutler.com](mailto:steve@nevillebutler.com)

**Natalie Butler, Broker**

[natalie@nevillebutler.com](mailto:natalie@nevillebutler.com)

Brokers are licensed in the state of Oregon. This information has been furnished from sources we deem reliable, but for which we assume no liability. This is an exclusive listing. The information contained herein is given in confidence with the understanding that all negotiations pertaining to this property be handled through Compass Commercial Real Estate Services. All measurements are approximate.